

THE GABRIELLE I-D

Award Winning Design



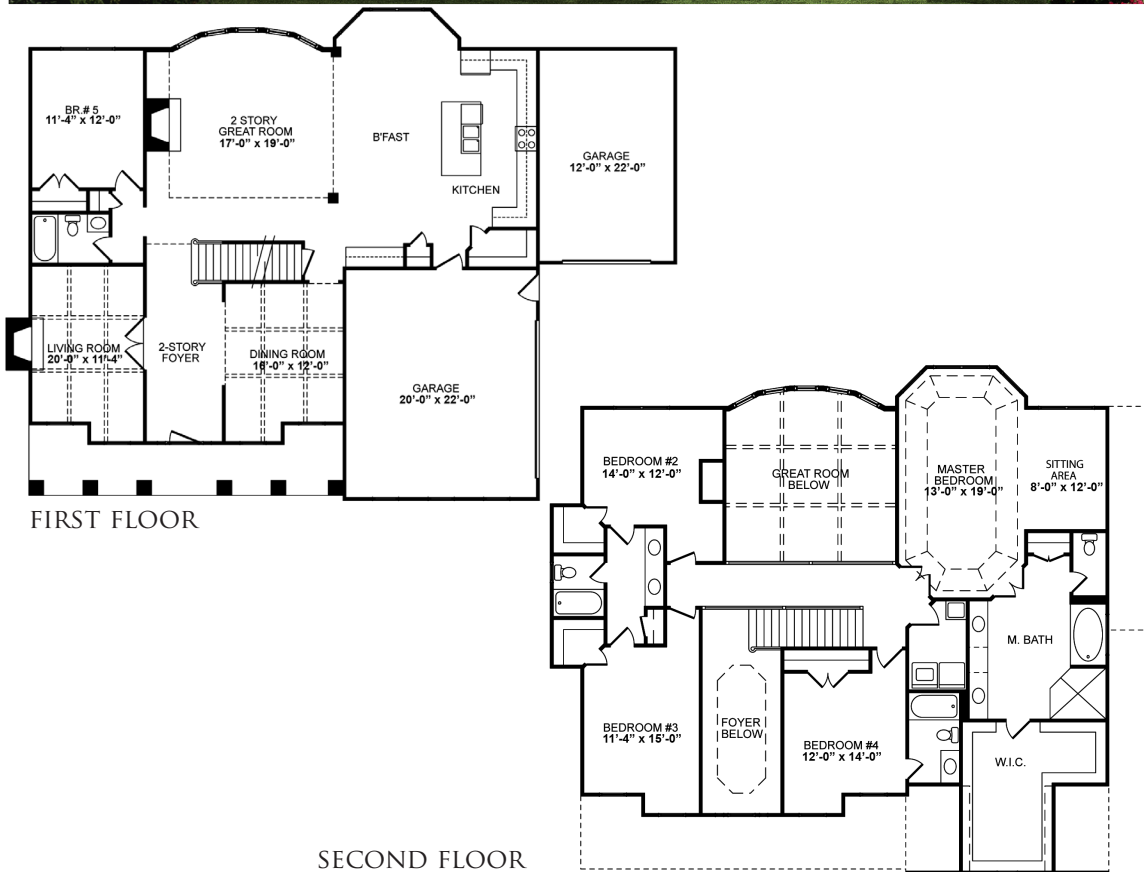
BAINBRIDGE
Homes

BEDROOMS: 5
BATHS: 4

The front entry opens to a remarkable family room with coffered ceiling and masterfully crafted wood columns.

Marvelously appointed, the gourmet kitchen adjoins the breakfast area and provides a center island, wonderful for entertaining.

Luxurious master bedroom suite features sitting area, lavish bath room with generous walk in closets. Once upstairs, an open catwalk leads to three bedrooms with ample space.



*All dimensions, features and specifications are subject to change and will vary by community and exterior design.

www.bainbridgehomesllc.com